

Pupil Enrollment

Projection Study Report

2022-2026

Presented to

Grosse Pointe Public School System

March 14, 2022





Pupil Enrollment Projection Study 2022-2026

Table of contents.

School District

Section 1

- a. School District Boundary Map
- b. General Characteristics of School District

Demographic Information

Section 2

- a. School District Demographic Report
- b. County Demographic Report
- c. County Live Birth Statistics

Pupil Enrollment Projection Methodology

Section 3

- a. Methodology Overview

District-Wide Pupil Enrollment Projections

Section 4

- a. School District Pupil Membership History
- b. Pupil Enrollment Projections



Pupil Enrollment Projection Study 2022-2026

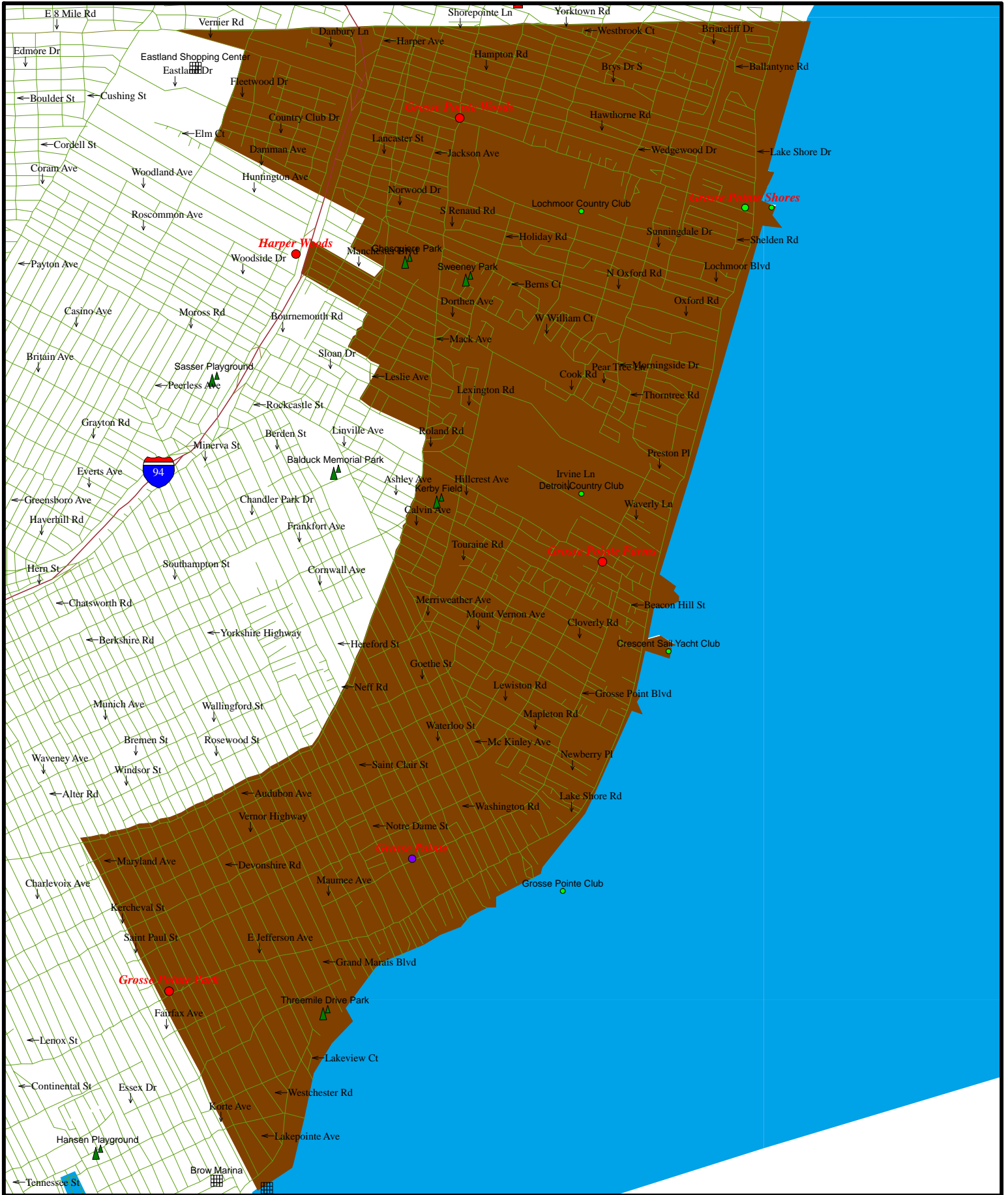


Section 1

School District

- a. School District Boundary Map
- b. General Characteristics of School District

Grosse Pointe Public School System



School District Data Book
 === General Characteristics Profile (Summary) ===

Primary Area: Grosse Pointe Public School System
 Comparison Area 1: County of: Wayne
 Comparison Area 2: State of: Michigan

	Primary Area	Comparison Area 1	Comparison Area 2
	Grosse Pointe Public School Sys	Wayne County	Michigan
County FIPS Code (Some Districts)			26163
Grade Range (District)	KG - 12		
Total Persons	49,550	1,737,900	9,998,925
Urban Population	100.00%	99.30%	74.69%
White	81.41%	46.74%	71.90%
Black	10.41%	38.74%	14.06%
Asian	3.05%	3.45%	3.21%
Am. Indian/Alaskan	0.17%	0.37%	0.82%
Other	0.35%	1.75%	1.71%
2 or More Races	2.17%	3.17%	3.42%
Hispanic	2.44%	5.77%	4.87%
Median Age	46.5	39.6	40.2
Total Housing Units	21,445	773,848	4,635,434
Total Housing Units - Occupied	20,113	683,221	3,975,882
Median Housing Value	\$ 232,131	\$ 113,979	\$ 125,826
Median Household Income	\$ 116,418	\$ 59,308	\$ 67,645
Average Household Income	\$ 157,064	\$ 78,889	\$ 87,816
Per Capita Personal Income	\$ 63,981	\$ 31,519	\$ 35,411
High Income Average	\$ 361,913	\$ 316,974	\$ 324,462
Total Number of Families	12,988	394,458	2,517,323
Total Number of Households	20,113	683,221	3,975,882
Average Household Size	2.46	2.51	2.46
Median Household Size	2.60	2.50	2.60
Median Age of Householder	57.0	52.5	54.1
Households with School Age Children	8,101	312,305	1,494,119
% of Household with School Age Children	40.3%	45.7%	37.6%
Average # of K-12 children per household	1.22	1.05	1.21
Average # of K-12 children per housing unit	0.40	0.46	0.38
Median Year Moved In	2009	2003	2004
Enrolled School Age Children PK-12	9,894	327,621	1,806,107
Enrolled in Public Pre-primary School	27.82%	70.48%	67.90%
Enrolled in Private Pre-primary School	72.18%	29.52%	32.10%
Enrolled in Public School (K-12)	85.51%	92.77%	88.92%
Enrolled in Private School (K-12)	14.49%	7.23%	11.08%
Household Educational Attainment (Pop 25+)			
Less Than High School (no diploma)	2.14%	13.43%	9.63%
High School Graduate	10.71%	30.26%	28.17%
Some College	15.50%	23.31%	23.77%
Associate's Degree (2 years)	7.64%	8.64%	9.72%
Bachelor's Degree (4 years)	35.28%	15.33%	17.49%
Master's Degree	20.24%	7.25%	8.33%
Professional Degree	6.67%	1.24%	1.76%
Doctorate Degree	1.82%	0.55%	1.14%
Employment Profile (Pop 16+)			
White Collar Occupations	80.25%	52.06%	58.20%
Blue Collar Occupations	8.59%	26.50%	23.55%
Service Occupations	11.17%	21.43%	18.25%

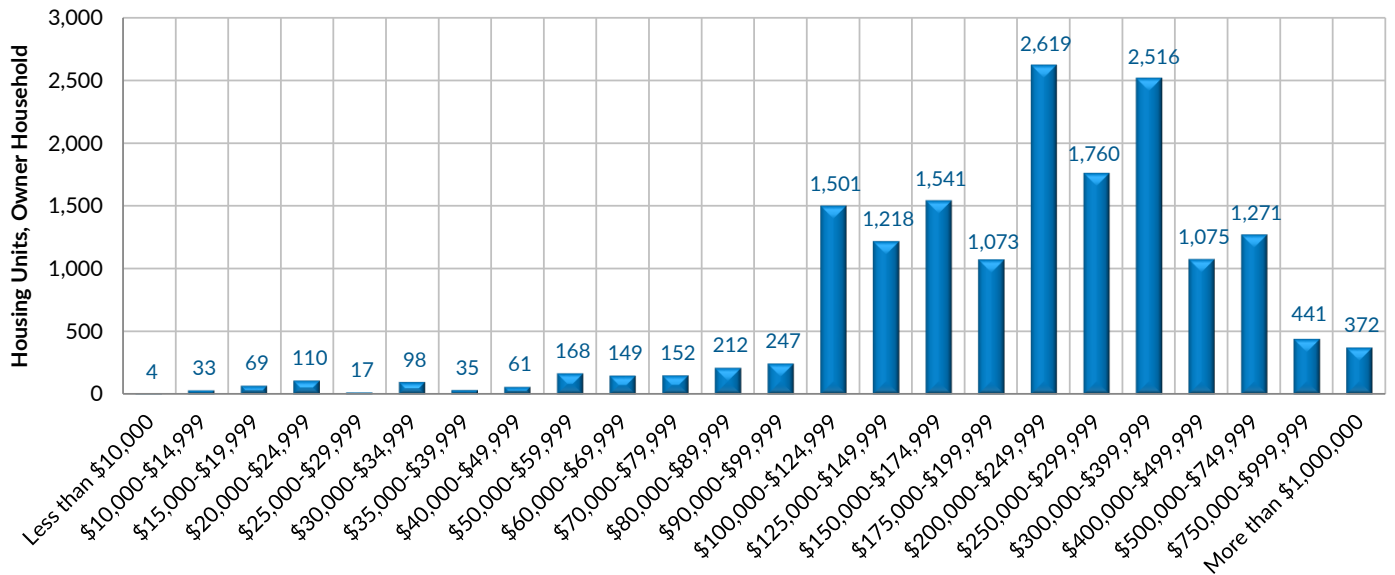
School District Data Book

=== General Characteristics Profile (Summary) ===

Primary Area: Grosse Pointe Public School System
Comparison Area 1: County of: Wayne
Comparison Area 2: State of: Michigan

	Primary Area	Comparison Area 1	Comparison Area 2
	Grosse Pointe Public School Sys	Wayne County	Michigan
Housing Value, Owner Household			
Less than \$10,000	0.02%	2.00%	2.13%
\$10,000-\$14,999	0.20%	1.74%	1.58%
\$15,000-\$19,999	0.41%	1.58%	1.35%
\$20,000-\$24,999	0.66%	2.10%	1.51%
\$25,000-\$29,999	0.10%	1.84%	1.29%
\$30,000-\$34,999	0.59%	2.50%	1.86%
\$35,000-\$39,999	0.21%	1.52%	1.20%
\$40,000-\$49,999	0.36%	4.10%	3.37%
\$50,000-\$59,999	1.00%	4.67%	4.12%
\$60,000-\$69,999	0.89%	4.86%	4.86%
\$70,000-\$79,999	0.91%	4.75%	5.42%
\$80,000-\$89,999	1.27%	5.03%	5.66%
\$90,000-\$99,999	1.48%	4.60%	4.49%
\$100,000-\$124,999	8.97%	15.62%	10.89%
\$125,000-\$149,999	7.28%	9.87%	8.25%
\$150,000-\$174,999	9.20%	10.12%	9.88%
\$175,000-\$199,999	6.41%	4.69%	6.05%
\$200,000-\$249,999	15.64%	6.83%	9.01%
\$250,000-\$299,999	10.51%	4.12%	6.23%
\$300,000-\$399,999	15.03%	3.93%	5.62%
\$400,000-\$499,999	6.42%	1.41%	2.11%
\$500,000-\$749,999	7.59%	1.27%	1.86%
\$750,000-\$999,999	2.63%	0.29%	0.56%
More than \$1,000,000	2.22%	0.58%	0.70%
Owner Households with Mortgage	60.27%	57.70%	61.98%
Owner Household with No Mortgage	39.73%	42.30%	38.02%

Grosse Pointe Public School System



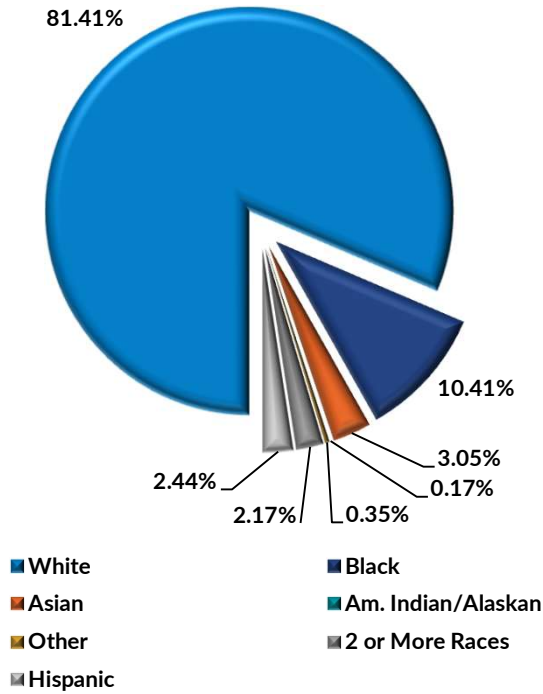
Housing Value, Owner Household

School District Data Book

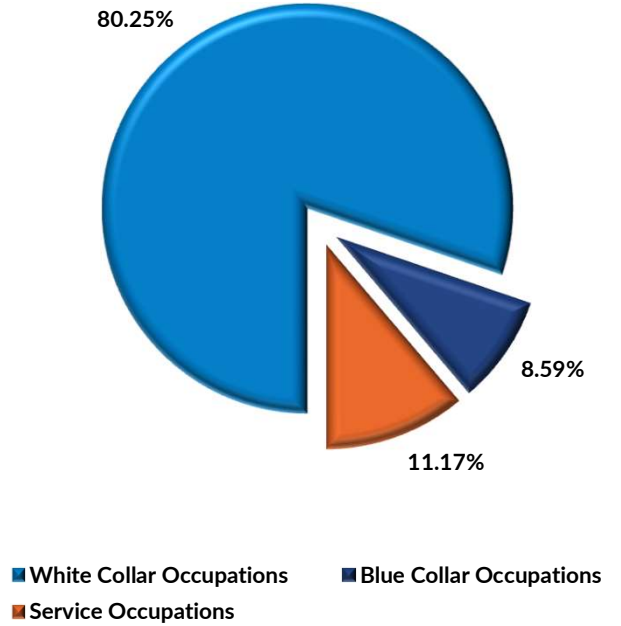
=== General Characteristics Profile (Summary) ===

Primary Area: Grosse Pointe Public School System

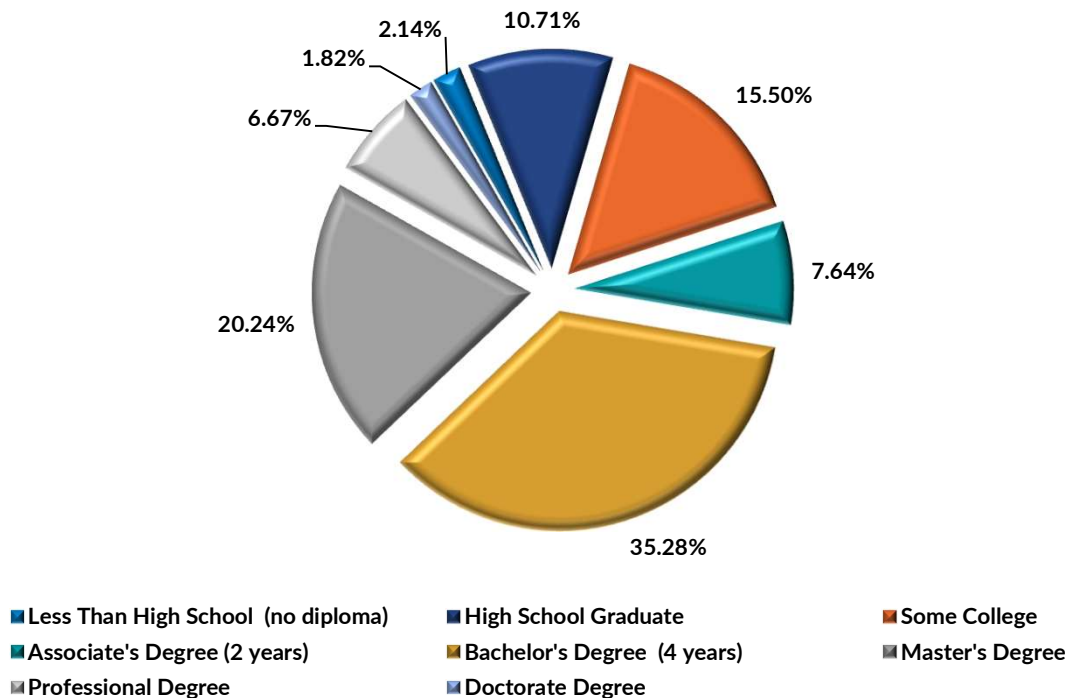
Population by Race / Ethnicity



Type of Employment



Household Educational Attainment





Section 2

Demographic Information

- a. School District Demographic Report
- b. County Demographic Report
- c. County Live Birth Statistics



Section 2

Demographic Information

- a. School District Demographic Report
- b. County Demographic Report
- c. County Live Birth Statistics

Grosse Pointe Public School System Demographic Trends and Analysis Summary

County Name: Wayne
State Name: Michigan

2021 - 2026

	2010	2021	2026	Variance	Percent
Total Population	52,002	49,550	49,180	(370)	-0.7%
Median Age	43.7	46.5	48.5	2.0	N/A
Total Aged 0-5 Years Old	3,187	2,612	2,404	(208)	-8.0%
Total Aged 6-11 Years Old	4,516	3,888	3,618	(270)	-6.9%
Total Aged 12-17 Years Old	5,247	4,478	4,193	(285)	-6.4%
Total Aged 18-24 Years Old	3,143	2,667	2,475	(192)	-7.2%
Total Households	20,717	20,113	20,116	3	0.0%
Median Household Size	2.70	2.60	2.50	(0.10)	-3.8%
1 Person Households	5,357	6,252	6,464	212	3.4%
2 Person Households	7,139	6,766	6,729	(37)	-0.5%
3 Person Households	3,360	3,041	2,993	(48)	-1.6%
4 Person Households	2,954	2,466	2,395	(71)	-2.9%
5 Person Households	1,361	1,182	1,153	(29)	-2.5%
6 Person Households	412	299	278	(21)	-7.0%
7 or more Person Households	134	107	104	(3)	-2.8%
Median Age of Householder	55.0	57.0	57.4	0.4	0.7%
Families	14,659	12,988	12,748	(240)	-1.8%
Family, Median Size	3.25	3.17	3.15	(0.02)	-0.6%
Family, Median Age	53.0	55.0	55.5	0.5	0.9%
Income Profile					
Total Household Income (Community)	\$ 2,486,647,846	\$ 3,159,027,232	\$ 3,094,948,941	\$ (64,078,291)	-2.0%
Median Household Income	\$ 90,109	\$ 116,418	\$ 123,356	\$ 6,938	6.0%
Average Household Income	\$ 120,029	\$ 157,064	\$ 153,855	\$ (3,209)	-2.0%
Per Capita Household Income	\$ 47,970	\$ 63,981	\$ 63,183	\$ (798)	-1.2%
Household High Average Income	\$ 342,726	\$ 361,913	\$ 319,548	\$ (42,365)	-11.7%
Households Earning < \$15K	1,269	923	843	(80)	-8.7%
Households Earning \$15-25K	1,210	750	644	(106)	-14.1%
Households Earning \$25-35K	1,273	897	787	(110)	-12.3%
Households Earning \$35-50K	1,912	1,423	1,332	(91)	-6.4%
Households Earning \$50-75K	3,073	2,375	2,220	(155)	-6.5%
Households Earning \$75-100K	2,683	2,314	2,243	(71)	-3.1%
Households Earning \$100-125K	2,237	2,093	2,129	36	1.7%
Households Earning \$125-150K	1,810	1,878	1,928	50	2.7%
Households Earning \$150-200K	2,236	2,560	2,638	78	3.0%
Households Earning \$200K+	3,014	4,900	5,352	452	9.2%

Grosse Pointe Public School System Demographic Trends and Analysis Summary

County Name: Wayne
State Name: Michigan

2021 - 2026

	2010	2021	2026	Variance	Percent
Enrolled School Age Children					
Enrolled Public School (PK-12)	8,829	7,965	7,834	(131)	-1.6%
Enrolled Public Preprimary	274	239	230	(9)	-3.8%
Enrolled Public Kindergarten	405	451	463	12	2.7%
Enrolled Public Grades 1-4	2,414	2,245	2,215	(30)	-1.3%
Enrolled Public Grades 5-8	2,456	2,328	2,310	(18)	-0.8%
Enrolled Public Grades 9-12	3,280	2,702	2,616	(86)	-3.2%
Enrolled Private School (PK-12)	2,439	1,929	1,863	(66)	-3.4%
Enrolled Private Preprimary	678	620	618	(2)	-0.3%
Enrolled Private Kindergarten	162	121	118	(3)	-2.5%
Enrolled Private Grades 1-4	526	385	365	(20)	-5.2%
Enrolled Private Grades 5-8	633	479	457	(22)	-4.6%
Enrolled Private Grades 9-12	440	324	305	(19)	-5.9%
Household Educational Attainment (Pop 25+)					
Less Than High School (no diploma)	1,054	767	736	(31)	-4.0%
High School Graduate	4,474	3,845	3,800	(45)	-1.2%
Some College	6,550	5,564	5,476	(88)	-1.6%
Associates Degree (2 years)	2,491	2,744	2,829	85	3.1%
Bachelors Degree (4 years)	11,282	12,668	13,125	457	3.6%
Master's Degree	6,482	7,268	7,515	247	3.4%
Professional Degree	2,775	2,394	2,366	(28)	-1.2%
Doctorate Degree	801	655	643	(12)	N/A
Employment Characteristics					
Labor Force (Pop 16+)					
Employment Potential	40,778	40,031	40,348	317	0.8%
Civilian	22,769	23,845	25,422	1,577	6.6%
Armed Forces	23	27	26	(1)	-3.7%
Unemployed	3,573	3,427	878	(2,549)	-74.4%
Not in the Labor Force	14,413	12,732	14,022	1,290	10.1%
General Characteristics (Pop 16+)					
White Collar	18,504	19,120	20,345	1,225	6.4%
Blue Collar	1,689	2,046	2,233	187	9.1%
For-Profit Wage & Salary Employees	13,728	15,555	16,803	1,248	8.0%
For-Profit Self-Employed	1,612	1,577	1,657	80	5.1%
Not-for-Profit Wage & Salary Workers	3,209	2,940	3,056	116	3.9%
Local Government Workers	1,568	1,633	1,730	97	5.9%
State Government Workers	887	641	635	(6)	-0.9%
Federal Government Workers	370	281	284	3	1.1%
Self-Employed Workers	1,386	1,206	1,244	38	3.2%
Unpaid Family Workers	9	12	13	1	8.3%

Grosse Pointe Public School System Demographic Trends and Analysis Summary

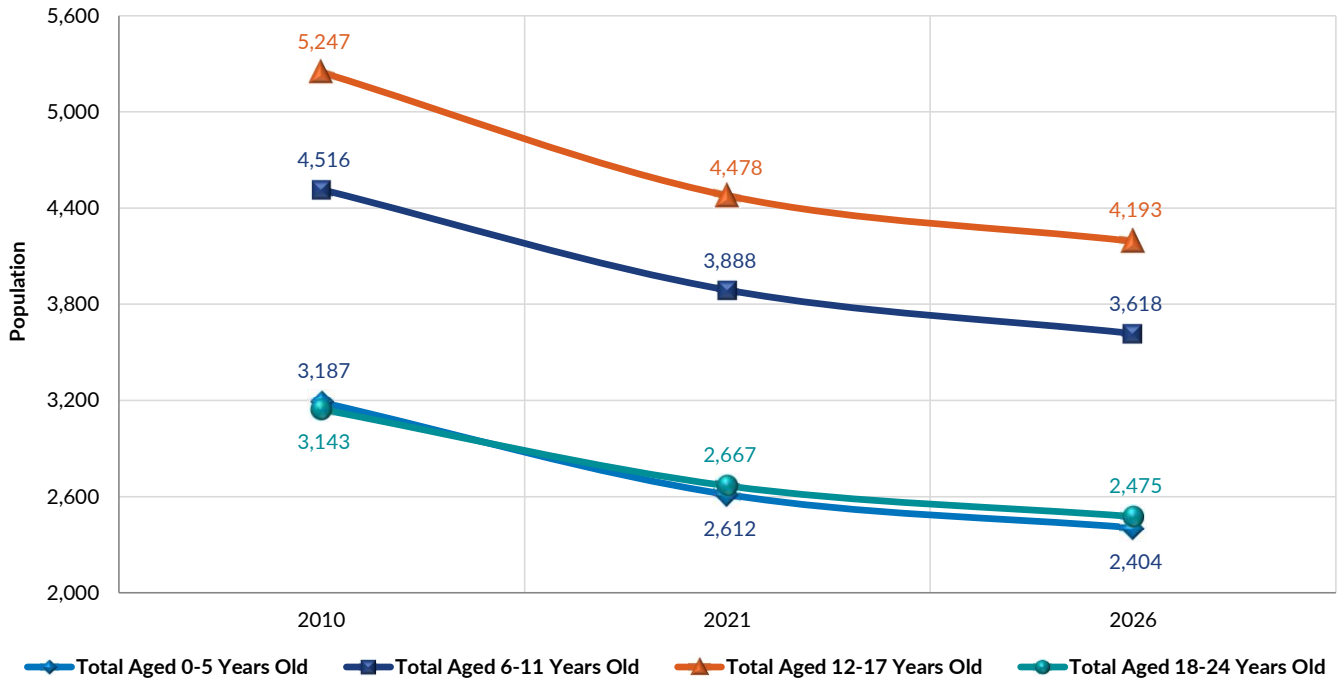
County Name: Wayne
State Name: Michigan

2021 - 2026

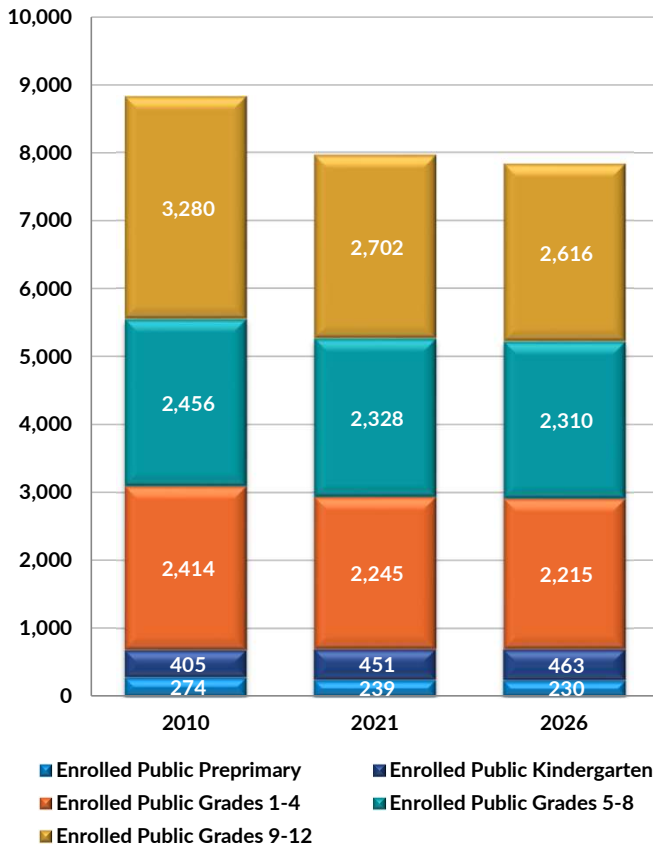
	2010	2021	2026	Variance	Percent
Industry (Pop 16+)					
Agriculture, Forestry, Fishing & Hunting	48	37	37	-	0.0%
Mining, Quarrying, Oil & Gas Extraction	13	17	19		
Construction	797	953	1,036	83	8.7%
Manufacturing	2,498	3,036	3,311	275	9.1%
Wholesale Trade	714	720	768	48	6.7%
Retail Trade	1,985	1,902	1,998	96	5.0%
Transportation & Warehousing	364	402	436	34	8.5%
Utilities	133	112	116	4	3.6%
Information	648	463	467	4	0.9%
Finance & Insurance	1,454	1,715	1,847	132	7.7%
Real Estate, Rental & Leasing	459	419	430	11	2.6%
Professional Scientific & Tech Services	2,843	3,280	3,534	254	7.7%
Management of Cos & Enterprises	19	27	30	3	11.1%
Admin & Support & Waste Mgmt Servs	463	378	390	12	3.2%
Educational Services	2,672	2,189	2,219	30	1.4%
Health Care & Social Assistance	4,042	4,365	4,690	325	7.4%
Arts, Entertainment & Recreation Servs	661	820	901	81	9.9%
Accommodation and Food Servs	1,017	1,204	1,304	100	8.3%
Other Services	869	835	873	38	4.6%
Public Administration	1,070	971	1,016	45	4.6%
Occupations (Pop 16+)					
Mgmt, Business & Financial Operations	4,917	5,757	6,242	485	8.4%
Professional and Related	7,990	9,371	10,158	787	8.4%
Sales and Office	5,597	3,992	3,945	(47)	-1.2%
Service	2,554	2,661	2,827	166	6.2%
Farming, Fishing and Forestry	22	18	17	(1)	-5.6%
Construction & Maintenance	728	718	749	31	4.3%
Production, Transportation & Moving	961	1,328	1,484	156	11.7%

Grosse Pointe Public School System

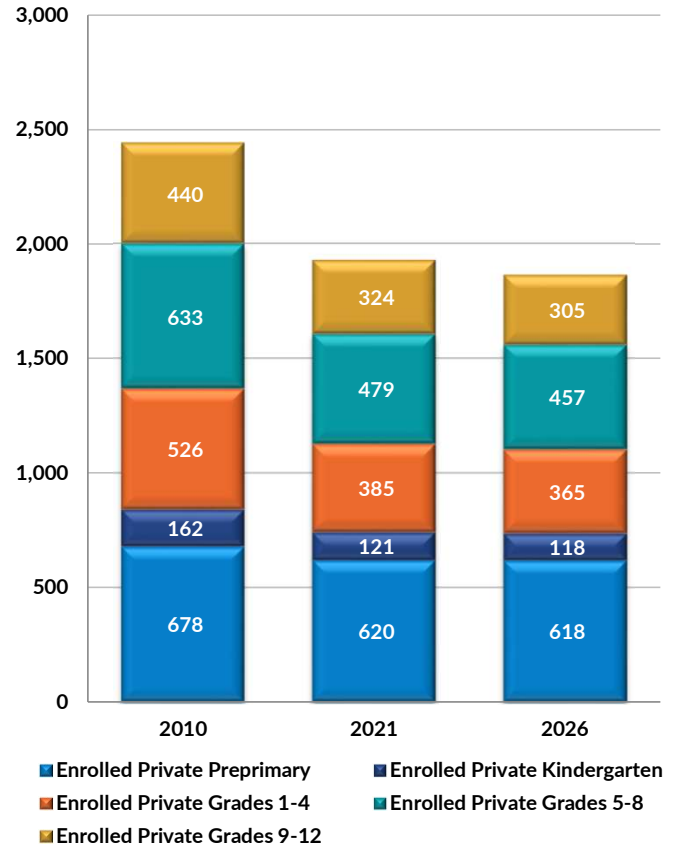
Population Trend by Age Groups



Enrolled in Public Schools (K-12)

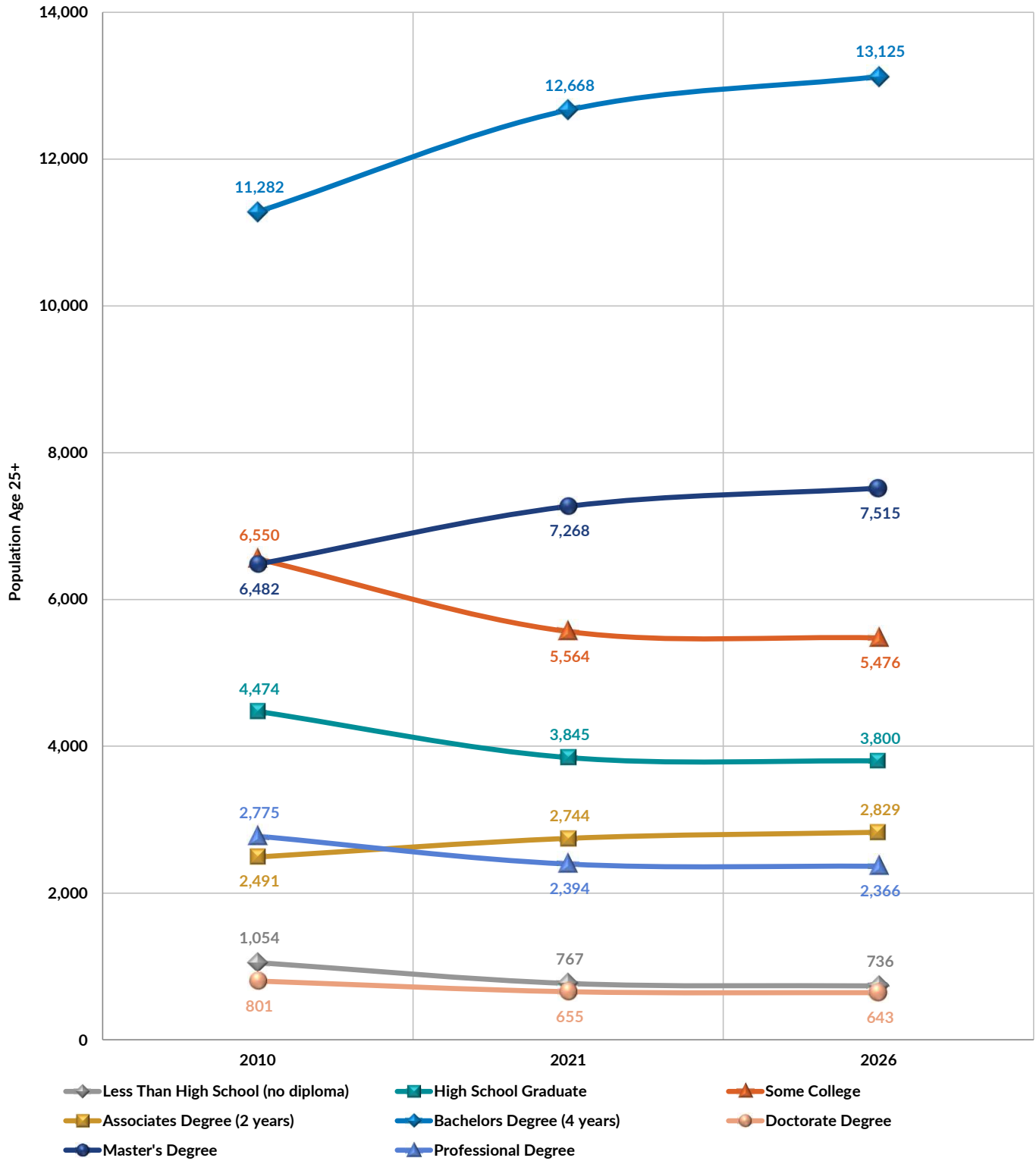


Enrolled in Private Schools (K-12)



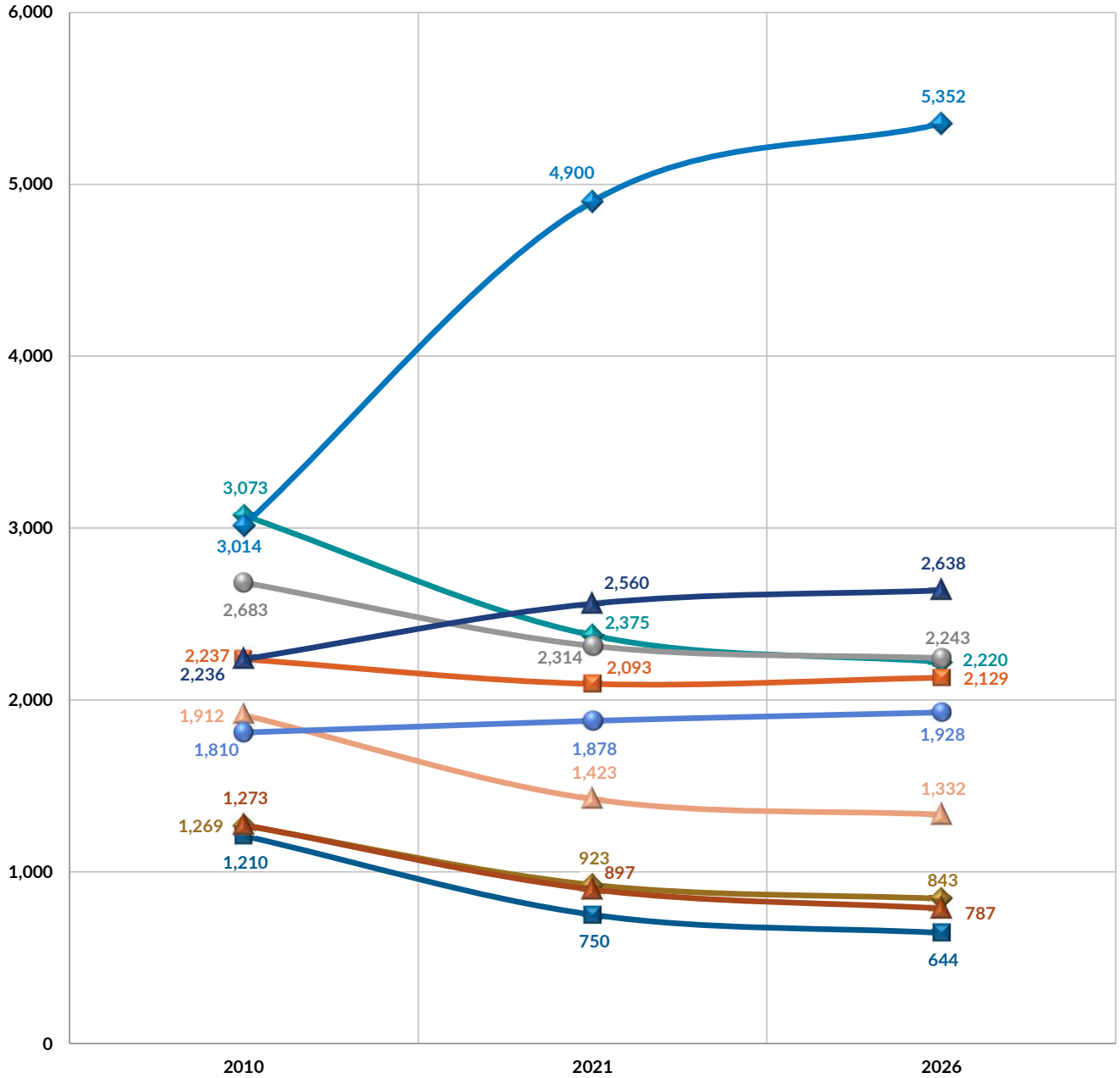
Grosse Pointe Public School System

Educational Attainment



Grosse Pointe Public School System

Households Earning Trend



- ◆ Households Earning < \$15K
- ▲ Households Earning \$15-25K
- ▲ Households Earning \$25-35K
- ▲ Households Earning \$35-50K
- ◆ Households Earning \$50-75K
- Households Earning \$75-100K
- Households Earning \$100-125K
- Households Earning \$125-150K
- ▲ Households Earning \$150-200K
- ◆ Households Earning \$200K+



Section 2

Demographic Information

- a. School District Demographic Report
- b. County Demographic Report
- c. County Live Birth Statistics

Wayne County Demographic Trends and Analysis Summary

CBSA (Metropolitan Area) Name: Detroit-Warren-Dearborn
County Name: Wayne
State Name: Michigan

2021 - 2026

	2010	2021	2026	Variance	Percent
Total Population	1,820,584	1,737,900	1,725,243	(12,657)	-0.7%
Median Age	37.2	39.6	41.0	1.4	N/A
Total Aged 0-5 Years Old	142,561	119,713	110,053	(9,660)	-8.1%
Total Aged 6-11 Years Old	151,535	131,420	122,669	(8,751)	-6.7%
Total Aged 12-17 Years Old	167,699	137,227	125,380	(11,847)	-8.6%
Total Aged 18-24 Years Old	176,772	147,229	135,422	(11,807)	-8.0%
Total Households	702,749	683,221	683,519	298	0.0%
Median Household Size	2.70	2.50	2.50	-	0.0%
1 Person Households	215,710	244,658	251,796	7,138	2.9%
2 Person Households	202,641	193,816	193,171	(645)	-0.3%
3 Person Households	112,847	102,702	101,151	(1,551)	-1.5%
4 Person Households	88,763	74,292	72,010	(2,282)	-3.1%
5 Person Households	46,317	40,352	39,454	(898)	-2.2%
6 Person Households	20,231	14,738	13,910	(828)	-5.6%
7 or more Person Households	16,240	12,663	12,027	(636)	-5.0%
Median Age of Householder	51.4	52.5	52.7	0.2	N/A
Families	450,651	394,458	386,240	(8,218)	(0)
Family, Median Size	3.49	3.41	3.39	(0.02)	-0.6%
Family, Median Age	49.1	50.1	50.3	0.2	N/A
Income Profile					
Total Household Income (Community)	\$ 41,576,771,782	\$ 54,777,392,504	\$ 58,410,059,292	\$ 3,632,666,788	6.6%
Median Household Income	\$ 43,336	\$ 59,308	\$ 64,969	\$ 5,661	9.5%
Average Household Income	\$ 59,163	\$ 78,889	\$ 84,059	\$ 5,170	6.6%
Personal per Capita Income	\$ 23,191	\$ 31,519	\$ 33,856	\$ 2,337	7.4%
Household High Average Income	\$ 313,101	\$ 316,974	\$ 311,230	\$ (5,744)	-1.8%
Households Earning < \$15K	131,907	92,730	79,668	(13,062)	-14.1%
Households Earning \$15-25K	88,506	64,051	57,485	(6,566)	-10.3%
Households Earning \$25-35K	77,043	63,537	63,219	(318)	-0.5%
Households Earning \$35-50K	97,021	81,192	77,776	(3,416)	-4.2%
Households Earning \$50-75K	115,135	107,699	106,236	(1,463)	-1.4%
Households Earning \$75-100K	75,371	87,283	92,427	5,144	5.9%
Households Earning \$100-125K	47,503	63,613	68,461	4,848	7.6%
Households Earning \$125-150K	27,293	44,437	50,255	5,818	13.1%
Households Earning \$150-200K	24,410	38,132	41,220	3,088	8.1%
Households Earning \$200K+	18,560	40,547	46,772	6,225	15.4%

Wayne County Demographic Trends and Analysis Summary

CBSA (Metropolitan Area) Name: Detroit-Warren-Dearborn
County Name: Wayne
State Name: Michigan

2021 - 2026

	2010	2021	2026	Variance	Percent
Enrolled School Age Children					
Enrolled Public School	440,847	388,481	381,046	(7,435)	-1.9%
Enrolled Private School	63,684	48,716	46,488	(2,228)	-4.6%
Enrolled Public Preprimary	20,255	17,166	16,680	(486)	-2.8%
Enrolled Private Preprimary	7,833	7,190	7,112	(78)	-1.1%
Enrolled Public Kindergarten	21,523	24,173	24,803	630	2.6%
Enrolled Private Kindergarten	3,027	2,281	2,165	(116)	-5.1%
Enrolled Public Grades 1-4	85,877	80,514	79,706	(808)	-1.0%
Enrolled Private Grades 1-4	9,231	6,799	6,446	(353)	-5.2%
Enrolled Public Grades 5-8	92,509	86,691	85,889	(802)	-0.9%
Enrolled Private Grades 5-8	8,957	6,812	6,483	(329)	-4.8%
Enrolled Public Grades 9-12	108,263	89,950	87,095	(2,855)	-3.2%
Enrolled Private Grades 9-12	8,256	6,045	5,711	(334)	-5.5%
Enrolled Public Undergrad College	96,572	70,600	66,711	(3,889)	-5.5%
Household Educational Attainment (Pop 25+)					
Household Educational Attainment (Pop 25+)	20,023	14,778	13,993	(785)	-5.3%
Enrolled Public Grad or Prof School	15,848	19,387	20,162	775	4.0%
Enrolled Private Grad or Prof School	6,357	4,811	4,578	(233)	-4.8%
Household Educational Attainment					
Less Than High School(no diploma)	190,316	161,493	160,101	(1,392)	-0.9%
High School Graduate	367,249	363,815	370,896	7,081	1.9%
Some College	292,382	280,249	283,596	3,347	1.2%
Associates Degree (2 years)	84,988	103,896	109,769	5,873	5.7%
Bachelors Degree(4 years)	151,454	184,288	194,227	9,939	5.4%
Masters Degree	72,405	87,126	91,576	4,450	5.1%
Professional Degree	15,678	14,860	14,997	137	0.9%
Doctorate Degree	7,545	6,584	6,557	(27)	-0.4%
Employment Characteristics					
Labor Force (Pop 16+)					
Employment Potential	1,414,070	1,394,439	1,408,458	14,019	1.0%
Civilian	671,470	711,880	764,627	52,747	7.4%
Armed Forces	405	470	475	5	1.1%
Unemployed	101,584	102,560	26,503	(76,057)	-74.2%
Not in the Labor Force	640,611	579,529	616,853	37,324	6.4%
General Characteristics (Pop 16+)					
White Collar	377,684	369,902	391,542	21,640	5.9%
Blue Collar	148,535	188,313	208,574	20,261	10.8%
For-Profit Wage & Salary Employees	486,591	542,595	587,711	45,116	8.3%
For-Profit Self-Employed	16,755	15,970	16,814	844	5.3%
Not-for-Profit Wage & Salary Workers	60,744	56,088	58,643	2,555	4.6%
Local Government Workers	45,733	47,034	50,138	3,104	6.6%
State Government Workers	19,643	14,504	14,565	61	0.4%
Federal Government Workers	14,505	11,588	11,765	177	1.5%
Self-Employed Workers	26,447	23,030	23,859	829	3.6%
Unpaid Family Workers	1,052	1,071	1,132	61	5.7%

Wayne County Demographic Trends and Analysis Summary

CBSA (Metropolitan Area) Name: Detroit-Warren-Dearborn

County Name: Wayne

State Name: Michigan

2021 - 2026

	2010	2021	2026	Variance	Percent
Industry (Pop 16+)					
Agriculture, Forestry, Fishing & Hunting	1,854	1,690	1,757	67	4.0%
Mining, Quarrying, Oil & Gas Extraction	325	453	508	55	12.1%
Construction	25,881	30,929	33,897	2,968	9.6%
Manufacturing	105,705	128,919	141,717	12,798	9.9%
Wholesale Trade	16,486	17,261	18,558	1,297	7.5%
Retail Trade	74,645	69,952	73,367	3,415	4.9%
Transportation & Warehousing	35,300	38,939	42,121	3,182	8.2%
Utilities	5,874	4,885	5,032	147	3.0%
Information	13,032	9,609	9,614	5	0.1%
Finance & Insurance	26,879	30,987	33,651	2,664	8.6%
Real Estate, Rental & Leasing	10,653	9,649	10,025	376	3.9%
Professional Scientific & Tech Services	33,887	38,479	41,672	3,193	8.3%
Management of Cos & Enterprises	548	739	836	97	13.1%
Admin & Support & Waste Mgmt Servs	32,695	27,806	28,693	887	3.2%
Educational Services	53,981	44,559	45,472	913	2.0%
Health Care & Social Assistance	104,396	116,700	126,264	9,564	8.2%
Arts, Entertainment, & Recreation Servs	14,470	17,577	19,277	1,700	9.7%
Accommodation & Food Servs	54,880	64,784	70,851	6,067	9.4%
Other Services	32,596	32,363	34,337	1,974	6.1%
Public Administration	27,383	25,600	26,978	1,378	5.4%
Occupations (Pop 16+)					
Mgmt, Business & Financial Ops	77,919	92,216	100,456	8,240	8.9%
Professional and Related	129,118	152,979	166,675	13,696	9.0%
Sales and Office	170,647	124,707	124,411	(296)	-0.2%
Service	143,654	152,288	163,087	10,799	7.1%
Farming, Fishing, and Forestry	1,597	1,377	1,424	47	3.4%
Construction, & Maintenance	44,766	44,777	47,329	2,552	5.7%
Production, Transportation & Moving	103,769	143,536	161,245	17,709	12.3%

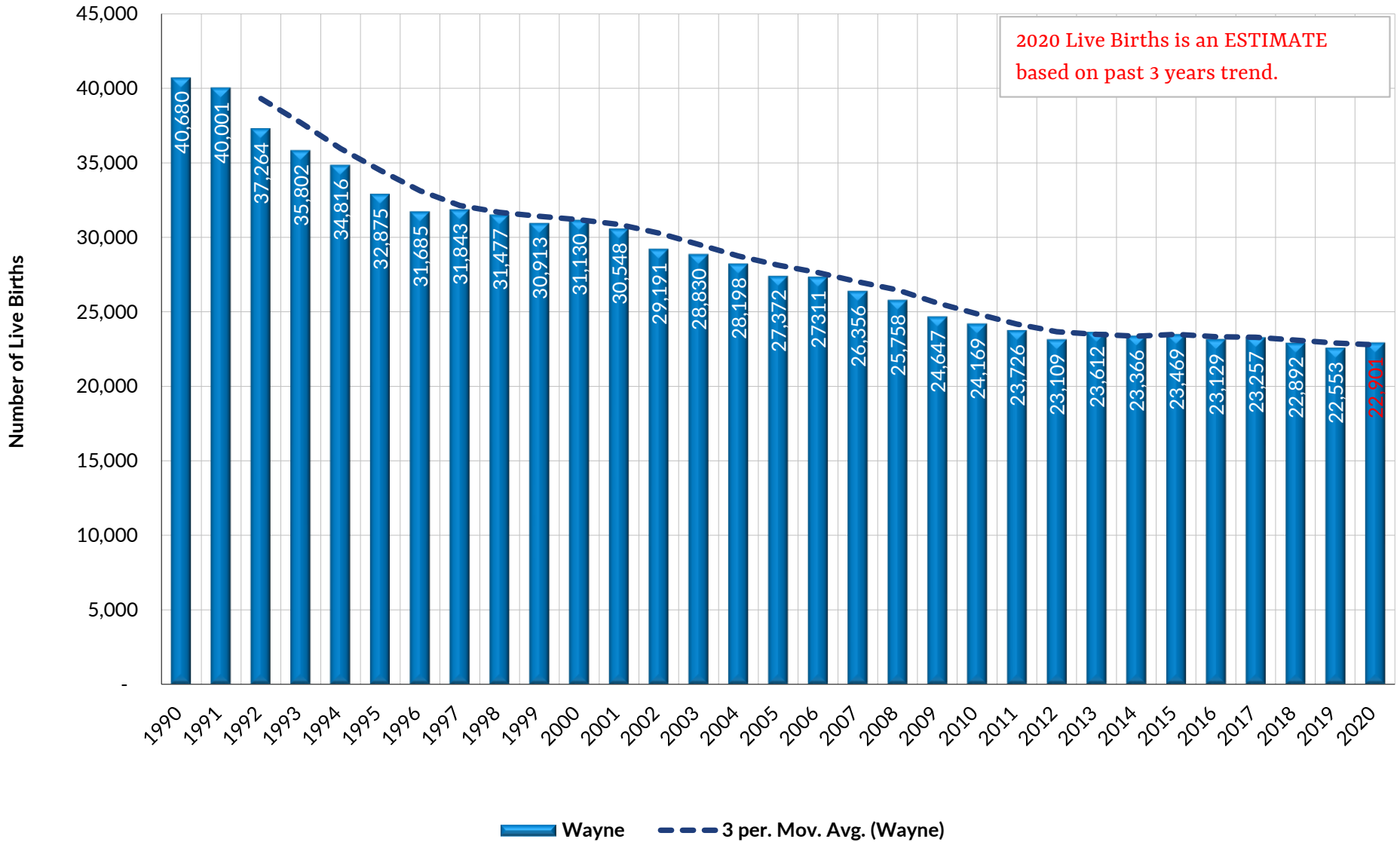


Section 2

Demographic Information

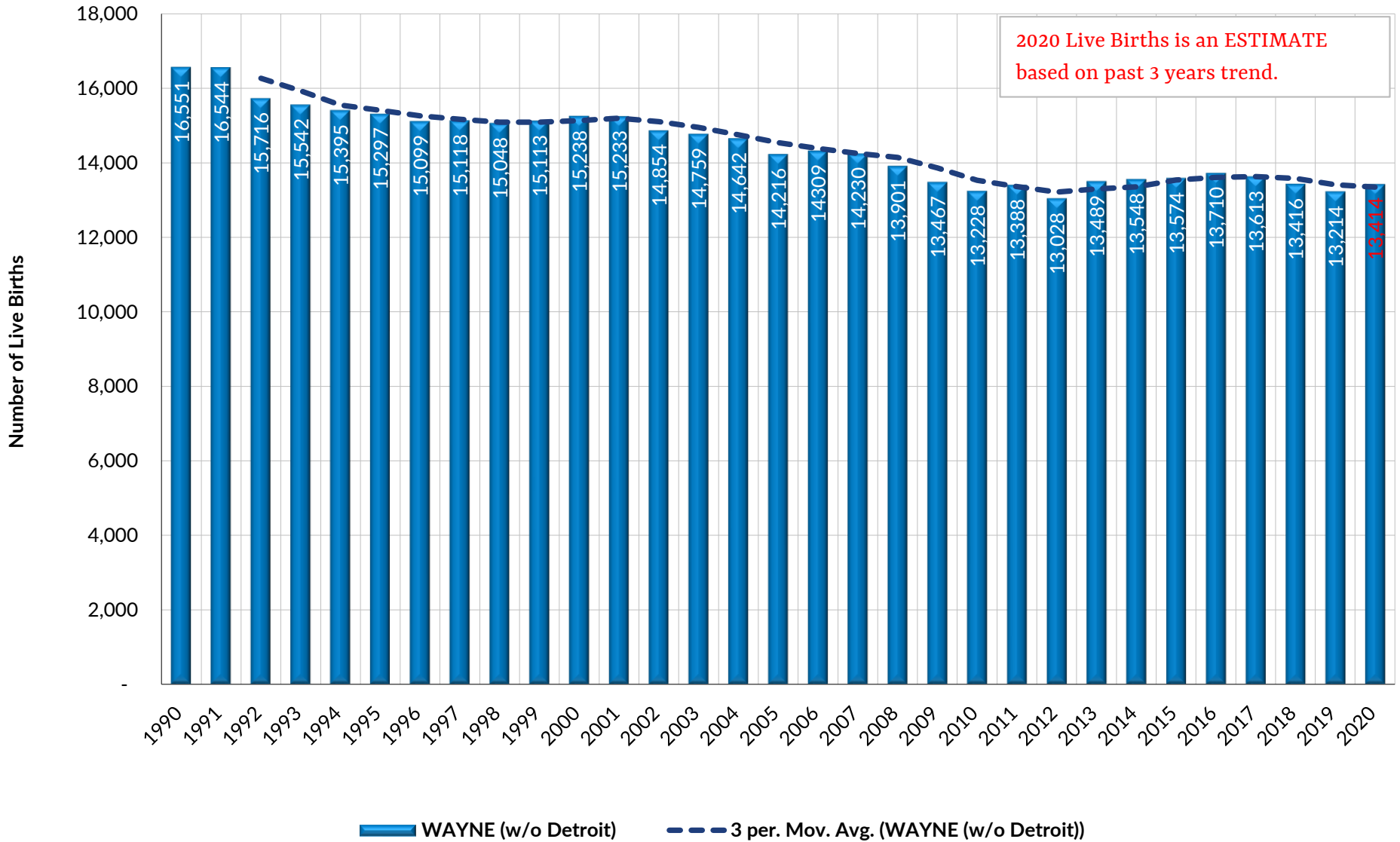
- a. School District Demographic Report
- b. County Demographic Report
- c. County Live Birth Statistics

Michigan Live Births by County of Residence *



* Source: Michigan Resident Birth Files, Division for Vital Records & Health Statistics, Michigan Department of Health & Human Services

Michigan Live Births by County of Residence *



* Source: Michigan Resident Birth Files, Division for Vital Records & Health Statistics, Michigan Department of Health & Human Services



Section 3

Pupil Enrollment Projection Methodology

a. Methodology Overview

Enrollment Projection Overview (District –Wide)

The following glossary provides a better understanding of the meaning and significance of the enclosed enrollment projection study report.

Plante Moran Cresa uses the standard Cohort Survival Method to project enrollments. The Method uses the historical survival ratios of your pupils from grade to grade to project future enrollment trends. The survival ratio compares the number of pupils in a particular grade last year against the number of pupils in the next advanced grade this year. For example, there were 100 first grade pupils last year and 112 second grade pupils this year; the survival ratio for last year's first grade class is 112%. Enrollment trends are then derived from these statistical data.

When projections are based on Full Time Equivalent (FTE) or Head counts as specified on the upper right of the table, the enrollment projections contain only mainstreamed Pre-kindergarten through 12th grade pupils. Special education pupils are included as general education pupils based on percentage of time spent in the general education classrooms (as Full Time Equivalent). Adult participants and special education pupils are not included in the historical data or projections. Historical pupil enrollment data is obtained from the Michigan Department of Education, Form DS-4061, for FTE, or from head counts provided by your school district.

County Births: This line shows the number of resident live births for the past 12 years in the county your school district is located. The live births are used to project by proportion the number of children born in your school district's county who will become pupils in your school district (**K% Birth**). The live births data is obtained from the Michigan Department of Public Health's Office of the State Registrar and Center for Health Statistics. Since the Department of Health cannot reasonably compile all the birth statistics from all counties for a particular year until at the earliest in the fourth quarter of the following year, the current year's number of live birth is therefore estimated.

Historical Data columns show past pupil enrollment history in your school district. These columns list pupil enrollments by grade for the past 6 years plus the current year. The percentages under the pupil enrollment numbers are the survival ratios for the respective grades that year. Please be alert for unusual variations in the survival ratios when reviewing these numbers since they are trend indicators for your school district's pupil enrollment.

Projection applies the survival ratios for the past seven years in a particular grade and extends it out for the next five to ten years. The shaded area represents pupils projected from county live birth statistics. The clear portion represents pupils who are already enrolled in your school district. The enrollment projections do not account for closing or opening of a private or chartered school, consolidation, annexation, or re-zoning of your district in the future. Such out-of-the-ordinary occurrences must be accounted for separately.

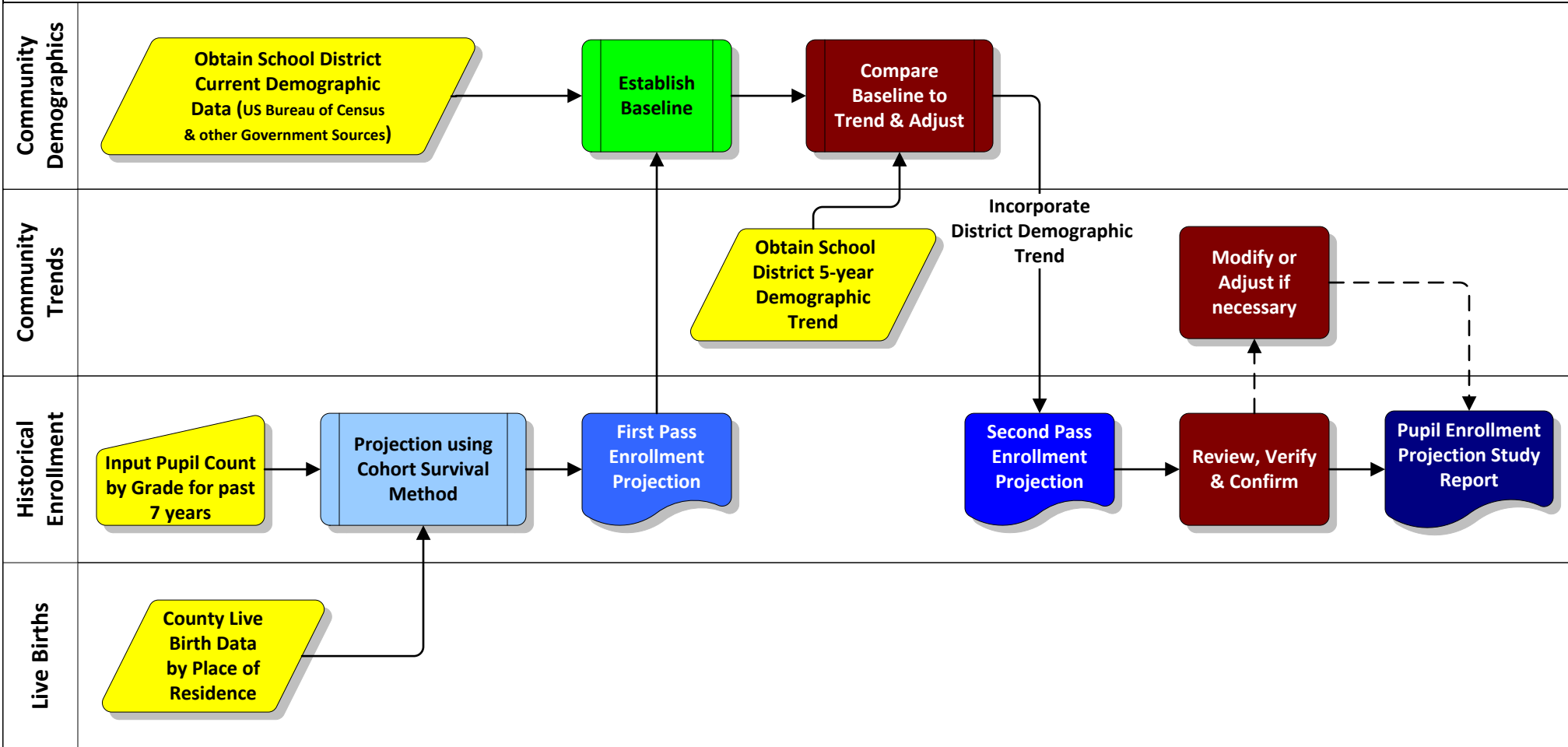
Grade Pattern: The second page of the enrollment projection report sums up (compiles) pupil enrollment by grades into groups that corresponding with your school district's grade pattern or building configuration. It is a tool to identify potential facility utilization, for considering future grade pattern changes, and for planning of future school facilities, etc.

If you have questions regarding the enrollment projection report, please call our educational planning staff.

Paul R. Wills, AIA (248) 223-3316

*Plante Moran Cresa, LLC
Copyright 2012
All Rights Reserved*

District-wide Pupil Enrollment Projection Methodology





Section 4

District-Wide Pupil Enrollment Projections

- a. School District Pupil Membership History
- b. Pupil Enrollment Projection



Section 4

District-Wide Pupil Enrollment Projections

- a. School District Pupil Membership History
- b. Pupil Enrollment Projection

Grosse Pointe Public School System

Wayne County, Michigan

K-12 Pupil Membership in General Education (Historical)

Please Indicate: FTE

DISTRICT WIDE (ALL PUPILS)

Grade	Academic Year EXAMPLE			Academic Year 2014			Academic Year 2015			Academic Year 2016			Academic Year 2017		
	Fall EXAMPLE	Spring EXAMPLE	Blended*	Fall 2014	Spring 2015	Blended*	Fall 2015	Spring 2016	Blended*	Fall 2016	Spring 2017	Blended*	Fall 2017	Spring 2018	Blended*
K	144.75	142.60	141.43	410.62	-	-	403.91	-	-	424.23	-	-	447.03	-	-
1	99.06	97.73	102.42	472.26	-	-	437.33	-	-	426.86	-	-	446.50	-	-
2	149.11	151.37	145.06	482.38	-	-	485.89	-	-	447.07	-	-	436.85	-	-
3	120.86	121.79	121.89	521.81	-	-	491.63	-	-	503.34	-	-	470.21	-	-
4	143.96	142.96	140.78	537.06	-	-	553.03	-	-	505.15	-	-	512.29	-	-
5	122.35	123.41	124.41	573.89	-	-	543.19	-	-	556.52	-	-	527.59	-	-
6	151.97	148.86	150.71	603.31	-	-	587.13	-	-	546.95	-	-	583.22	-	-
7	145.31	142.48	146.90	682.84	-	-	610.98	-	-	592.69	-	-	560.13	-	-
8	171.81	172.31	171.58	685.36	-	-	683.41	-	-	618.38	-	-	603.49	-	-
9	174.79	174.42	173.17	755.17	-	-	727.30	-	-	753.13	-	-	681.40	-	-
10	158.68	158.58	157.10	751.81	-	-	766.77	-	-	723.34	-	-	749.94	-	-
11	142.83	139.83	144.61	714.67	-	-	724.99	-	-	744.72	-	-	709.17	-	-
12	162.22	159.57	162.58	708.10	-	-	691.22	-	-	711.38	-	-	730.13	-	-
K-12	1,887.70	1,875.91	1,882.63	7,899.28	-	-	7,706.78	-	-	7,553.76	-	-	7,457.95	-	-
Y5	-	-	-	-	-	-	-	-	-	57.84	-	-	57.00	-	-
Other	-	-	-	14.81	-	-	6.29	-	-	5.22	-	-	3.30	-	-
SE	-	-	-	280.85	-	-	292.82	-	-	305.37	-	-	312.00	-	-
Total	1,887.70	1,875.91	1,882.63	8,194.94	-	-	8,005.89	-	-	7,922.19	-	-	7,830.25	-	-

Grade	Academic Year 2018			Academic Year 2019			Academic Year 2020			Academic Year 2021			Academic Year 2022 Projected		
	Fall 2018	Spring 2019	Blended*	Fall 2019	Spring 2020	Blended*	Fall 2020	Spring 2021	Blended*	Fall 2021	Spring 2022	Blended*	Fall 2022 Projected	Spring 2023 Projected	Blended 2022 Projected
K	425.57	-	-	459.71	-	-	424.84	-	-	448.63	-	-	484.39	-	-
1	461.11	-	-	441.88	-	-	425.24	-	-	432.09	-	-	458.07	-	-
2	450.09	-	-	459.70	-	-	405.97	-	-	411.26	-	-	427.88	-	-
3	452.77	-	-	463.45	-	-	441.30	-	-	397.17	-	-	417.91	-	-
4	481.36	-	-	448.23	-	-	429.85	-	-	443.33	-	-	396.91	-	-
5	522.65	-	-	485.80	-	-	421.32	-	-	415.40	-	-	442.70	-	-
6	524.59	-	-	521.63	-	-	458.30	-	-	411.74	-	-	413.52	-	-
7	574.02	-	-	525.63	-	-	512.02	-	-	432.93	-	-	408.38	-	-
8	566.32	-	-	565.75	-	-	505.84	-	-	489.21	-	-	429.30	-	-
9	647.55	-	-	626.98	-	-	584.62	-	-	526.93	-	-	527.05	-	-
10	671.82	-	-	652.82	-	-	616.78	-	-	581.94	-	-	524.17	-	-
11	732.33	-	-	654.58	-	-	638.97	-	-	598.03	-	-	567.96	-	-
12	701.60	-	-	716.46	-	-	642.77	-	-	633.53	-	-	588.83	-	-
K-12	7,211.78	-	-	7,022.62	-	-	6,507.82	-	-	6,222.19	-	-	6,087.06	-	-
Y5	86.00	-	-	99.00	-	-	98.00	-	-	98.00**	-	-	90.91	-	-
Other	1.73	-	-	4.96	-	-	5.80	-	-	5.94	-	-	5.15	-	-
SE	320.79	-	-	323.07	-	-	309.13	-	-	283.96	-	-	282.33	-	-
Total	7,620.30	-	-	7,449.65	-	-	6,920.75	-	-	6,610.09	-	-	6,465.44	-	-

**estimated pending District review

Note: * Pupil Blended Count membership (number) is calculated based on 90% of Fall count & 10% of Spring count of a Calendar year.

Source: Office of Pupil Accounting, Grosse Pointe Public School System



Section 4

District-Wide Pupil Enrollment Projections

- a. School District Pupil Membership History
- b. Pupil Enrollment Projections

ENROLLMENT PROJECTION USING COHORT SURVIVAL METHOD & Adjusted to Community Demographic Trends

Educational Agency Name: **Grosse Pointe Public School System**
County: **Wayne**

BASED ON 2021 FALL FTE COUNT
DISTRICT WIDE (ALL PUPILS)

Birth Yr	2010	2011	2012	2013	2014	2015	2016	2017	2018	2019	2020	2021	2020/21 Live Births are ESTIMATES based on past 3 years trend
Births	24,169	23,726	23,109	23,612	23,366	23,469	23,129	23,257	22,892	22,553	23,093	23,038	
K% Birth	1.67%	1.79%	1.93%	1.80%	1.97%	1.81%	1.94%	2.08%	1.90%	1.92%	1.92%	1.93%	Anticipated Non-historical Factor: 0.08%

Grade	Historical Data							Projection Data									
	2015	2016	2017	2018	2019	2020	2021	2022	2023	2024	2025	2026	2027	2028	2029	2030	2031
K	404	424	447	426	460	425	449	484	436	433	443	446	N.A.	N.A.	N.A.	N.A.	N.A.
1	437	427	447	461	442	425	432	458	495	445	442	452	455	N.A.	N.A.	N.A.	N.A.
		105.68%	105.25%	103.15%	103.83%	92.50%	101.71%	102.10%	102.10%	102.10%	102.10%	102.10%	102.10%	102.10%	102.10%	102.10%	102.10%
2	486	447	437	450	460	406	411	428	454	490	441	438	448	451	N.A.	N.A.	N.A.
		102.23%	102.34%	100.80%	99.69%	91.87%	96.71%	99.02%	99.02%	99.02%	99.02%	99.02%	99.02%	99.02%	99.02%	99.02%	99.02%
3	492	503	470	453	463	441	397	418	435	461	498	448	445	455	458	N.A.	N.A.
		103.59%	105.18%	103.64%	102.97%	96.00%	97.83%	101.62%	101.62%	101.62%	101.62%	101.62%	101.62%	101.62%	101.62%	101.62%	101.62%
4	553	505	512	481	448	430	443	397	418	435	461	497	447	445	455	458	N.A.
		102.75%	101.78%	102.37%	99.00%	92.75%	100.46%	99.93%	99.93%	99.93%	99.93%	99.93%	99.93%	99.93%	99.93%	99.93%	99.93%
5	543	557	528	523	486	421	415	443	396	417	434	460	497	447	444	454	457
		100.63%	104.44%	102.02%	100.92%	94.00%	96.64%	99.86%	99.86%	99.86%	99.86%	99.86%	99.86%	99.86%	99.86%	99.86%	99.86%
6	587	547	583	525	522	458	412	414	441	395	415	432	458	494	445	442	452
		100.69%	104.80%	99.43%	99.80%	94.34%	97.73%	99.55%	99.55%	99.55%	99.55%	99.55%	99.55%	99.55%	99.55%	99.55%	99.55%
7	611	593	560	574	526	512	433	408	410	437	391	412	428	454	490	441	438
		100.95%	102.41%	98.42%	100.20%	98.16%	94.46%	99.18%	99.18%	99.18%	99.18%	99.18%	99.18%	99.18%	99.18%	99.18%	99.18%
8	683	618	603	566	566	506	489	429	405	407	433	388	408	425	450	486	437
		101.21%	101.82%	101.11%	98.56%	96.23%	95.55%	99.16%	99.16%	99.16%	99.16%	99.16%	99.16%	99.16%	99.16%	99.16%	99.16%
9	727	753	681	648	627	585	527	527	463	436	438	467	418	440	458	485	524
		110.20%	110.19%	107.30%	110.71%	103.34%	104.17%	107.73%	107.73%	107.73%	107.73%	107.73%	107.73%	107.73%	107.73%	107.73%	107.73%
10	767	723	750	672	653	617	582	524	524	460	434	436	465	416	438	455	483
		99.46%	99.58%	98.59%	100.81%	98.37%	99.54%	99.48%	99.48%	99.48%	99.48%	99.48%	99.48%	99.48%	99.48%	99.48%	99.48%
11	725	745	709	732	655	639	598	568	512	512	449	424	425	453	406	427	444
		97.12%	98.04%	97.65%	97.43%	97.88%	96.96%	97.60%	97.60%	97.60%	97.60%	97.60%	97.60%	97.60%	97.60%	97.60%	97.60%
12	691	711	730	702	716	643	634	589	559	504	504	442	417	419	446	400	421
		98.12%	98.04%	98.93%	97.83%	98.20%	99.15%	98.46%	98.46%	98.46%	98.46%	98.46%	98.46%	98.46%	98.46%	98.46%	98.46%
K - 12	7,707	7,554	7,458	7,212	7,023	6,508	6,222	6,087	5,946	5,830	5,783	5,741	N.A.	N.A.	N.A.	N.A.	N.A.
Year-to-Year #Growth:		-153	-96	-246	-189	-515	-286	-135	-141	-116	-48	-42					
Year-to-Year %Growth:		-1.99%	-1.27%	-3.30%	-2.62%	-7.33%	-4.39%	-2.17%	-2.32%	-1.95%	-0.82%	-0.72%					
Y5	-	58	57	86	99	98	98	91	89	87	86	86					
Other	6	5	3	2	5	6	6	5	5	5	5	5					
SE	293	305	312	321	323	309	284	282	276	270	268	266					
Totals	8,006	7,922	7,830	7,620	7,450	6,921	6,610	6,465	6,316	6,193	6,142	6,098					

Projections for Young 5's, Special Education and "Other" pupils are based on 3-year averaging trends and are not affected by community demographics.

Note: K-12 General Education Pupil Enrollment history and projections do not include self-contained special education, alternative education or part-time students (in FTE's).

ENROLLMENT PROJECTION USING COHORT SURVIVAL METHOD & Adjusted to Community Demographic Trends

Educational Agency Name: **Grosse Pointe Public School System**
County: **Wayne**

BASED ON 2021 FALL FTE COUNT
DISTRICT WIDE (ALL PUPILS)

Grade Pattern Compilation

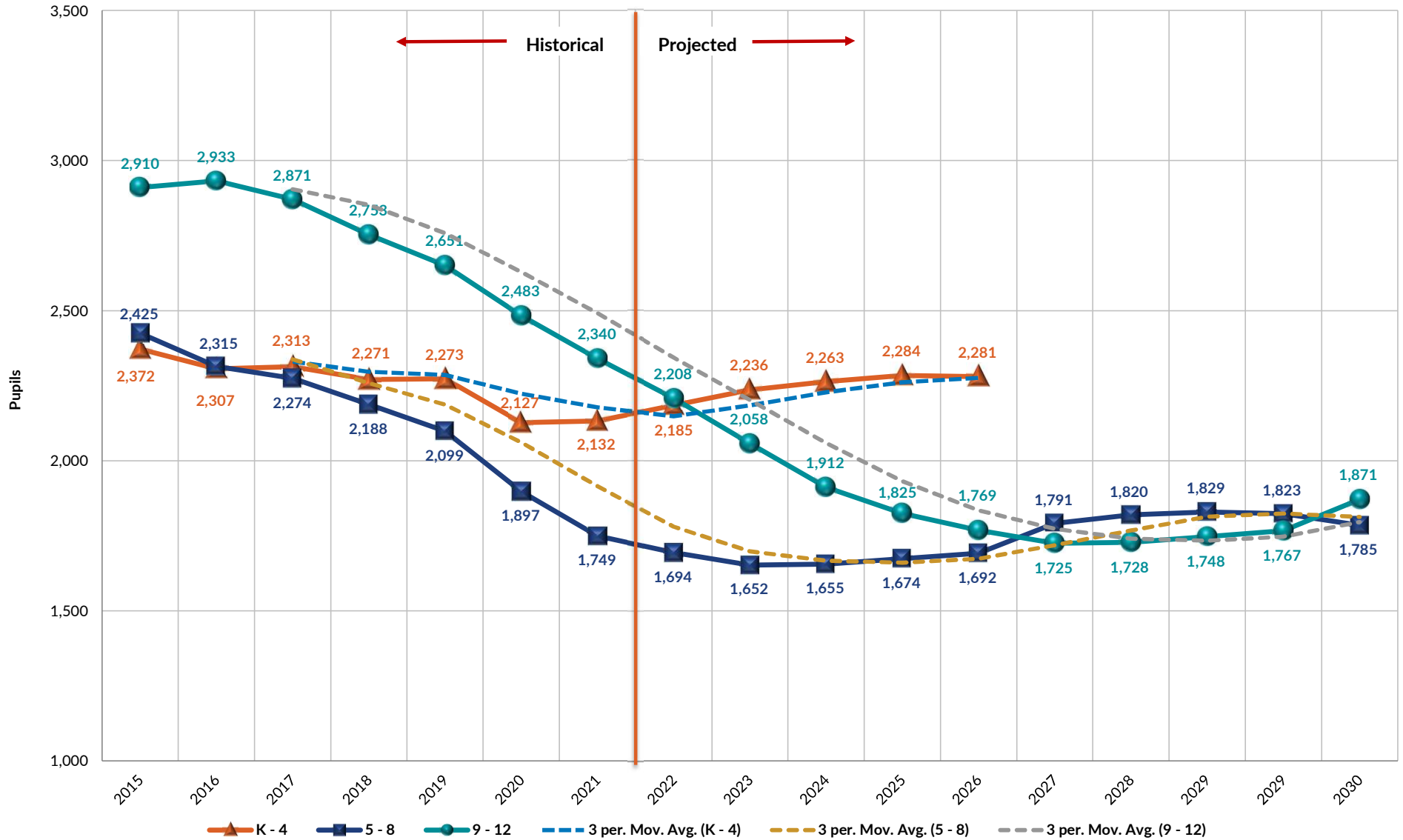
Grade Pattern	Historical Data							Projection Data									
	2015	2016	2017	2018	2019	2020	2021	2022	2023	2024	2025	2026	2027	2028	2029	2029	2030
	2016	2017	2018	2019	2020	2021	2022	2023	2024	2025	2026	2027	2028	2029	2030	2030	2031
K - 1	841	851	894	887	902	850	881	942	930	878	885	898	N.A.	N.A.	N.A.	N.A.	N.A.
K - 2	1,327	1,298	1,330	1,337	1,361	1,256	1,292	1,370	1,384	1,368	1,326	1,336	N.A.	N.A.	N.A.	N.A.	N.A.
K - 3	1,819	1,802	1,801	1,790	1,825	1,697	1,689	1,788	1,819	1,829	1,823	1,783	N.A.	N.A.	N.A.	N.A.	N.A.
K - 4	2,372	2,307	2,313	2,271	2,273	2,127	2,132	2,185	2,236	2,263	2,284	2,281	N.A.	N.A.	N.A.	N.A.	N.A.
K - 5	2,915	2,863	2,840	2,794	2,759	2,549	2,548	2,628	2,633	2,680	2,718	2,741	N.A.	N.A.	N.A.	N.A.	N.A.
K - 6	3,502	3,410	3,424	3,318	3,280	3,007	2,960	3,041	3,073	3,075	3,133	3,173	N.A.	N.A.	N.A.	N.A.	N.A.
1 - 2	923	874	883	911	902	831	843	886	948	935	883	890	903	N.A.	N.A.	N.A.	N.A.
1 - 3	1,415	1,377	1,354	1,364	1,365	1,273	1,241	1,304	1,383	1,396	1,380	1,338	1,348	N.A.	N.A.	N.A.	N.A.
1 - 4	1,968	1,882	1,866	1,845	1,813	1,702	1,684	1,701	1,801	1,830	1,841	1,835	1,795	N.A.	N.A.	N.A.	N.A.
1 - 5	2,511	2,439	2,393	2,368	2,299	2,124	2,099	2,143	2,197	2,247	2,275	2,295	2,292	N.A.	N.A.	N.A.	N.A.
1 - 6	3,098	2,986	2,977	2,893	2,821	2,582	2,511	2,557	2,638	2,642	2,690	2,727	2,750	N.A.	N.A.	N.A.	N.A.
2 - 3	978	950	907	903	923	847	808	846	888	951	938	886	893	906	N.A.	N.A.	N.A.
2 - 4	1,531	1,456	1,419	1,384	1,371	1,277	1,252	1,243	1,306	1,385	1,399	1,383	1,340	1,350	N.A.	N.A.	N.A.
2 - 5	2,074	2,012	1,947	1,907	1,857	1,698	1,667	1,685	1,702	1,802	1,833	1,843	1,837	1,797	N.A.	N.A.	N.A.
2 - 6	2,661	2,559	2,530	2,431	2,379	2,157	2,079	2,099	2,143	2,197	2,248	2,275	2,295	2,291	N.A.	N.A.	N.A.
3 - 4	1,045	1,008	983	934	912	871	841	815	852	895	958	945	892	900	913	N.A.	N.A.
3 - 5	1,588	1,565	1,510	1,457	1,397	1,292	1,256	1,258	1,249	1,312	1,392	1,405	1,389	1,346	1,357	N.A.	N.A.
3 - 6	2,175	2,112	2,093	1,981	1,919	1,751	1,668	1,671	1,689	1,707	1,807	1,837	1,847	1,841	1,801	N.A.	N.A.
4 - 5	1,096	1,062	1,040	1,004	934	851	859	840	814	852	895	957	944	891	899	912	N.A.
4 - 6	1,683	1,609	1,623	1,529	1,456	1,309	1,270	1,253	1,255	1,246	1,310	1,389	1,402	1,386	1,344	1,354	N.A.
5 - 6	1,130	1,103	1,111	1,047	1,007	880	827	856	837	812	849	892	955	941	889	896	909
5 - 7	1,741	1,696	1,671	1,621	1,533	1,392	1,260	1,265	1,247	1,249	1,240	1,304	1,383	1,395	1,379	1,337	1,347
5 - 8	2,425	2,315	2,274	2,188	2,099	1,897	1,749	1,694	1,652	1,655	1,674	1,692	1,791	1,820	1,829	1,823	1,785
6 - 7	1,198	1,140	1,143	1,099	1,047	970	845	822	851	832	806	844	886	949	935	883	890
6 - 8	1,882	1,758	1,747	1,665	1,613	1,476	1,334	1,251	1,256	1,238	1,240	1,232	1,295	1,373	1,385	1,369	1,328
7 - 8	1,294	1,211	1,164	1,140	1,091	1,018	922	838	815	844	825	800	837	879	941	927	876
7 - 9	2,022	1,964	1,845	1,788	1,718	1,602	1,449	1,365	1,278	1,280	1,263	1,267	1,255	1,319	1,398	1,413	1,400
7 - 10	2,788	2,688	2,595	2,460	2,371	2,219	2,031	1,889	1,802	1,740	1,697	1,703	1,719	1,735	1,836	1,868	1,882
7 - 11	3,513	3,432	3,304	3,192	3,026	2,858	2,629	2,457	2,313	2,252	2,146	2,126	2,145	2,188	2,242	2,295	2,327
7 - 12	4,205	4,144	4,034	3,894	3,742	3,501	3,263	3,046	2,873	2,756	2,650	2,568	2,562	2,607	2,688	2,695	2,747
8 - 9	1,411	1,372	1,285	1,214	1,193	1,090	1,016	956	867	843	872	855	826	865	908	971	961
8 - 10	2,177	2,095	2,035	1,886	1,846	1,707	1,598	1,481	1,392	1,303	1,306	1,291	1,291	1,281	1,346	1,427	1,444
8 - 11	2,902	2,840	2,744	2,618	2,500	2,346	2,196	2,048	1,903	1,815	1,755	1,714	1,716	1,734	1,752	1,854	1,888
8 - 12	3,594	3,551	3,474	3,320	3,217	2,989	2,830	2,637	2,463	2,318	2,258	2,157	2,133	2,153	2,198	2,253	2,309
9 - 10	1,494	1,476	1,431	1,319	1,280	1,201	1,109	1,051	987	896	872	903	883	856	895	940	1,007
9 - 11	2,219	2,221	2,141	2,052	1,934	1,840	1,707	1,619	1,498	1,408	1,321	1,326	1,308	1,309	1,301	1,368	1,451
9 - 12	2,910	2,933	2,871	2,753	2,651	2,483	2,340	2,208	2,058	1,912	1,825	1,769	1,725	1,728	1,748	1,767	1,871
10 - 12	2,183	2,179	2,189	2,106	2,024	1,899	1,814	1,681	1,595	1,475	1,387	1,302	1,307	1,288	1,290	1,282	1,347

ENROLLMENT PROJECTION USING COHORT SURVIVAL METHOD & Adjusted to Community Demographic Trends

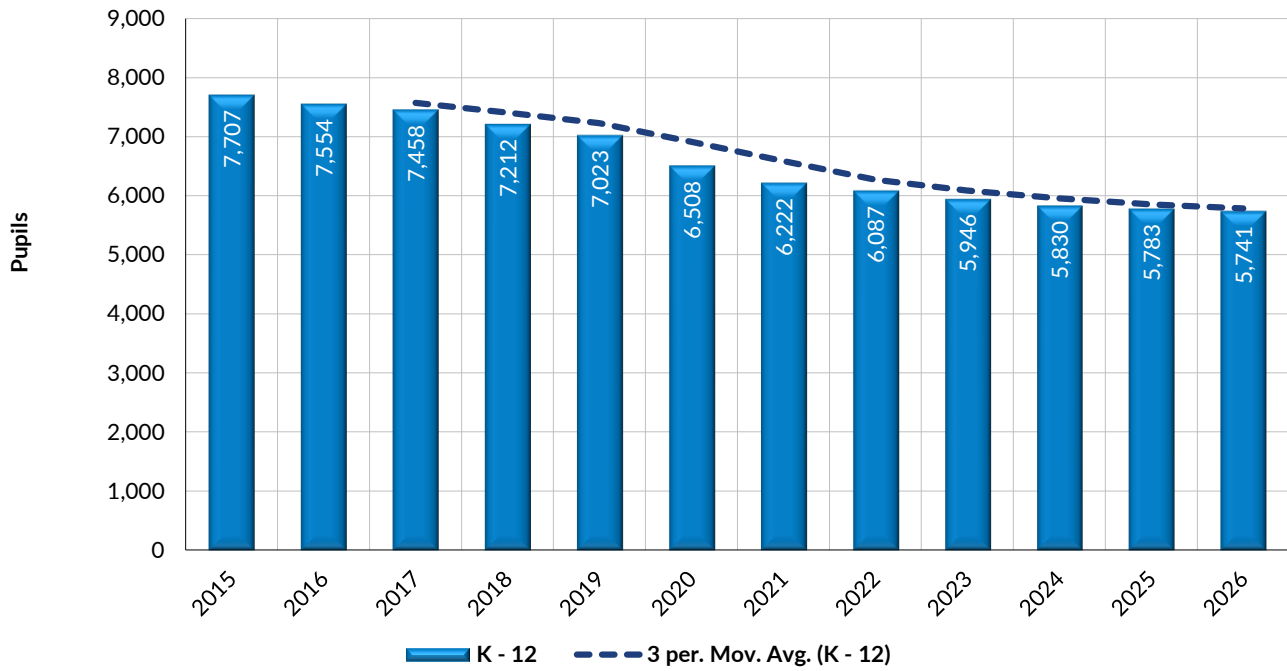
Educational Agency Name: Grosse Pointe Public School System
County: Wayne

BASED ON 2021 FALL FTE COUNT
DISTRICT WIDE (ALL PUPILS)

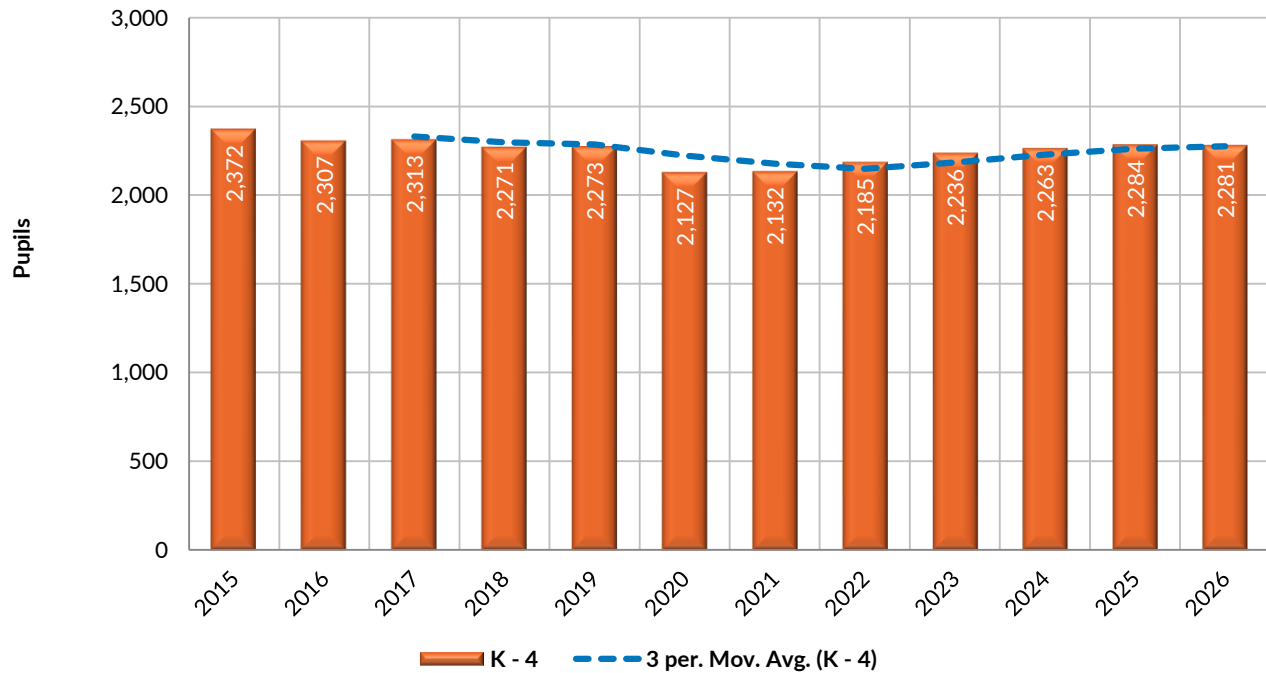
Grade Pattern Compilation



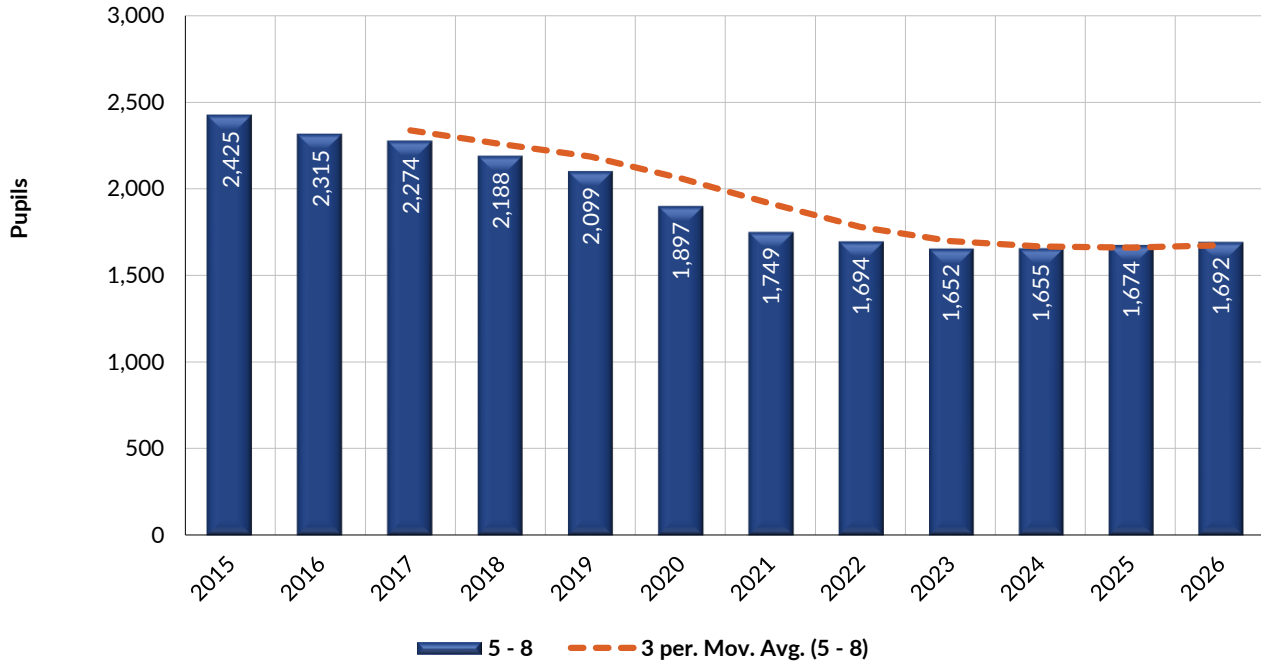
Pupil Enrollment Projection Study
Grades K - 12



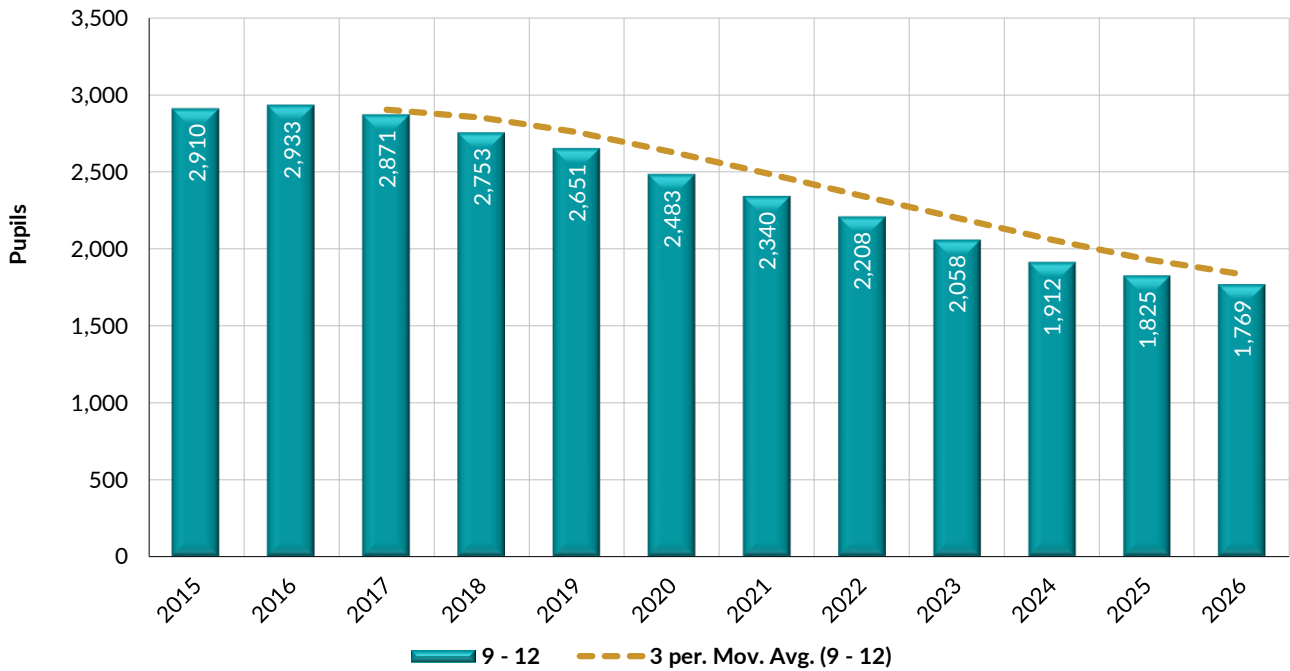
Pupil Enrollment Projection Study
Grades K - 4



Pupil Enrollment Projection Study
Grades 5 - 8



Pupil Enrollment Projection Study
Grades 9 - 12





For more information, please contact:

Paul Wills, AIA, LEED AP
Partner
248 223-3316

plante moran | cresa

pmcresa.com